

3500

ELEVATING DUAL DRAFT GROSSING STATION



EPCC / PRODUCTS / APPLICATION / SOFTWARE / ACCESSORIES / CONSUMABLES / SERVICES

Analytical Technologies Limited

An ISO 9001 Certified Company

ATL Elevating series Grossing Station were designed to provide Sturdy, customizable & affordable workstation for Elite Labs large Labs. It comes with height adjustable feature, Supports multiuser operation, Inbuilt Gross Imaging System & Formalin Monitor. The Elite Elevating series workstation comes with higher suction capacity, ergonomically designed & additional height adjustable features that assists in high productivity grossing as well as protects you from inhaling harmful Formalin fumes.

►► Specification

Model	3500
MOC	SS304 (Standard) / SS316 (Optional)
Ventilation	Backdraft
Dimension	Minimum : 1850mm Length x 825mm Width x 2150 mm Height Maximum : 1850mm Length x 825mm Width x 2450 mm Height
Work Surface	900mm Minimum height Height can be increased upto 1200mm by feather touch controls
Sink	380mm length x 350mm width x 180mm deep sink
Filters	Water washable polyester prefilters along with optional custom designed filter
Electrical	220 - 240 VAC 50/ 60 Hz, 1 Phase, 110 V supplied on request
Plumbing	1/2" industrial grade 1meter flexible hose supplied for hot and cold water connection 1 1/2" drain hose (waste disposal)
Waste Disposal	0.55 HP High capacity waste disposal unit.
Exhaust air capacity	1800 CMH
Perforated working area	1450mm length x 470mm width
Exhaust Duct Diameter	200mm diameter



High Quality 24MP Camera with 2 Focus Lights for Capturing Specimen Grossing

Type	Digital, AF/AE single-lens reflex camera with built-in flash
Image Format	Approx. 22mm x 14mm)
Image Sensor Type	CMOS Sensor
Effective Pixels	Approx. 24.1 megapixels (rounded to the nearest 100,000)
Pixel Unit	Approx. 3.52 μm square
Aspect Ratio	3:2 (Horizontal : Vertical)
Image Format	JPEG, RAW (14 bit)
Autofocus Type	TTL secondary image-forming phase-difference detection system
Focusing Modes	Autofocus
Video Shooting File Format	MOV: Movie: MPEG4 AVC/H.264
Direct Printing Compatible	Audio: Linear PCM
Printers	PictBridge-compatible printers
File Size	[Full HD] 1920 x 1080 (30 fps/24 fps): 340 MB/min. [HD] 1280 x 720 (60 fps): 340 MB/min. [SD] 640 x 480 (30 fps): 90 MB/min.

►► Standard Features

- Anti Corrosive Construction
- Perforated Worktop
- Inbuilt Ventilation
- Spacious Sink
- Backdraft Extraction
- Boundry Rinse
- Powerful Lights
- Towel Holders
- Laser Etched Cutting Board
- Custom Filters
- Ergonomic Design
- Instrument Holder (Magnetic)
- Height Adjustable
- Spacious Shelves
- Hand Rinse
- Bio Decomposer (Heavy Duty)
- Transparent Panels
- Work floor Levelling
- Formalin Dispenser
- Hands Free Control
- Safety Shield
- Pullout Pad
- Formalin Monitoring System
- Adjustable Shelves
- Path Imaging System
- 24.1 Mega pixel CMOS (APS-C) Sensor
- DIGIC 4+ Image Processor
- Remote Shooting and Wireless Printing
- 9-point AF System and AI Servo AF
- Full HD 30p
- Auto White Balance with "White Priority."

►► Optional Features

- Magnifying Lamp
- MOC: SS316
- Optional Carbon Filter
- Trash Cabinet

►► Advantages

- High-resolution 24.1 Mega pixel APS-C sensor.
- Scene Intelligent Auto Mode
- Delivers accurate exposure
- Performs superbly even in low light
- Fast and Accurate Autofocus
- Consistent Focus with incredible degree of reliability

►► BASIC FEATURES

Some of the software's basic features include:

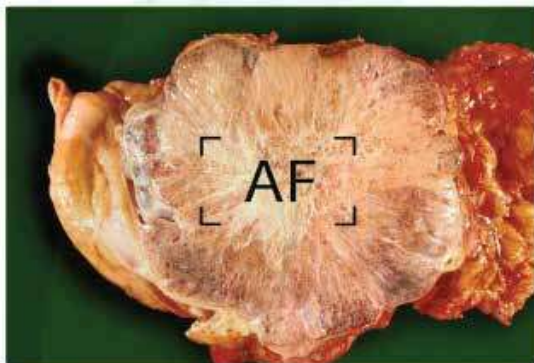
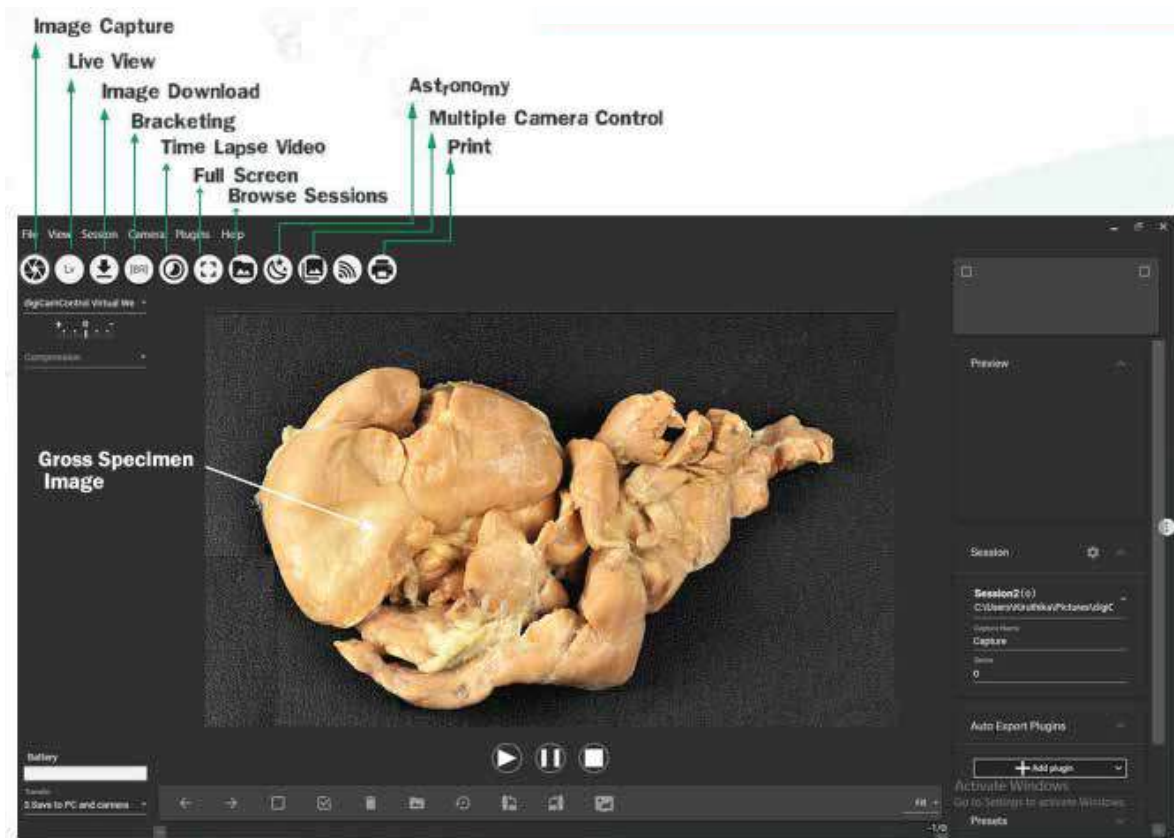
- Exposure, Gain, White Balance
- Saturation, Brightness, Contrast, Gamma
- Frame Rate Setting
- Image Rotation
- Darkfield Correction
- Image Capture
- Video Capture
- Color Adjustment

►► LIVE VIEW

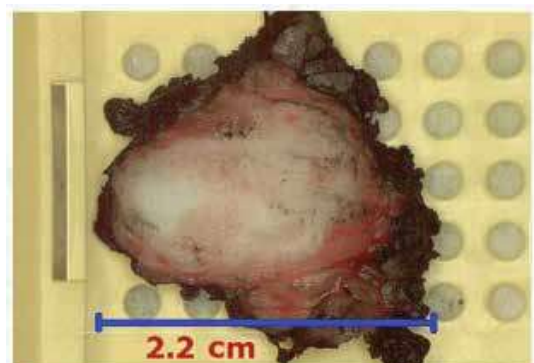
- See the image live through the camera on your computer monitor
- Countdown counter for delayed capture
- Record video & Create time-lapse video
- Print one or multiple photos
- File Transfers via Print, Send via Email, Copy or Download Photos

►► CAPTURE

- Control camera remotely from PC.
- Image capture remotely from PC.
- Manage multiple session profiles.
- Review images in full screen.
- Advanced file and folder naming.
- Create back-up copy for photos.
- Transform photo with auto export.



INTELLIGENT AUTO FOCUS



HD IMAGE & VIDEO

HPLC Servicing, Validation, Trainings and Preventive Maintenance :

HPLC Servicing :HPLC Servicing : We have team of service engineers who can attend to any make of HPLC promptly @the most affordable cost.

Trainings :We also take up preventive Maintenance to reduce downtime of HPLC's Trainings.

AMC's/CMC :AMC's/CMC :We offer user training both in-House and at customer sites on HPLC principles, operations, trouble-shooting.

Validations :Validations :We have protocols for carrying out periodic Validations as per GLP/GMP/USFDA norms.

Instruments :Instruments :We offer instruments/Renting Services Modules like pumps,detector etc. on Rent.



About Analytical Technologies

Analytical Technologies is synonymous for offering technologies for doing analysis and is the Fastest Growing Global Brand having presence in at least 96 countries across the global. Analytical Technologies Limited is an ISO:9001 Certified Company engaged in Designing, Manufacturing, Marketing & providing Services for the Analytical, Chromatography, Spectroscopy, Bio Technology, Bio Medical, Clinical Diagnostics, Material Science & General Laboratory Instrumentation. Analytical Technologies, India has across the Country operations with at least 4 Regional Offices, 6 Branch Offices & Service Centers. Distributors & Channel partners worldwide.

Our Products & Technologies



UV/VIS
Spectro 2080+
Double Beam



Infra FTIR



Optima Gas
Chromatograph
3007



Optima Gas
Chromatograph
2979 Plus



Flash
Chromatograph



Atomic Absorption
Spectrophotometer



Liquid Particle
Counter



Optical Emission
Spectrophotometer



DSC/TGA



Semi Auto Bio
Chemistry Analyzer



HEMA 2062
Hematology
Analyzer



Micro Plate
Reader/Washer



URINOVA 2800
Urine Analyzer



Total Organic
Carbon 3800



Fully Automated
CLIA



NOVA-2100
Chemistry Analyzer



PCR/Gradient PCR/
RTPCR



TOC
Analyzer



Laser Particle
Size Analyzer



Ion Chromatograph



Water purification
system

Regulatory compliances



Corporate Social Responsibility

Analytical Foundation is a nonprofit organization (NGO) found for the purpose of:



Analytical Foundation

1. Research & Innovation Scientist's awards/QC Professional Award : Quality life is possible by innovation only and the innovation is possible by research only, hence ANALYTICAL FOUNDATION is committed to identify such personalities for their contributions across various field of Science and Technology and awarding them yearly. To participate for award, send us your details of research / testing / publication at Info@analyticalfoundation.org

2. Improving quality of life by offering YOGA Training courses, Work shops/Seminars etc.

3. ANALYTICAL FOUNDATION aims to DETOXYFY human minds,souls and body by means of yoga, Meditation, Ayurveda, Health Care, Awards, Media, Events, Camps etc.



 **Analytical**®
Technologies Limited

HPLC Solutions MultipleLabs Analytical Bio-Med Analytical Distributors Analytical Foundation (Trust)

Corporate & Regd. Office:
Analytical House, # E67 & E68,
Ravi Park, Vasna Road, Baroda,
Gujarat 390 015. INDIA

T: +91 265 2253620
+91 265 2252839
+91 265 2252370
F: +91 265 2254395

E: info@hplctechnologies.com
info@multiplelabs.com
info@analyticalgroup.net
info@analyticalbiomed.com

W. www.analyticalgroup.net
www.hplctechnologies.com
www.multiplelabs.com
www.ais-india.com

Sales & Support Offices:
across the country :
Distributors & Channel
partners World Wide